

349D2 L

Hydraulic Excavator



Engine

| | | |
|--------------------------------|-----------------|--------|
| Engine Model | Cat® C13 ACERT™ | |
| Engine Power (ISO 14396) | 301 kW | 403 hp |
| Net Power (SAE J1349/ISO 9249) | 289 kW | 387 hp |

Weights

| | | |
|--------------------|-----------|------------|
| Operating Weight | | |
| Long Undercarriage | 48 185 kg | 106,200 lb |

349D2 L Differentiating Features

Engine and Hydraulics

A powerful Cat C13 ACERT engine combines with a highly efficient hydraulic system to deliver excellent performance with low fuel consumption. In fact, the 349D2 L uses up to 9 percent less fuel than its predecessor moving the same amount of material in optimized Economy Mode.

Structures

Caterpillar design and manufacturing techniques assure you get outstanding durability and service life in the toughest applications.

Operator Station

The spacious ROPS (Roll Over Protective Structure) cab features excellent visibility and easy-to-access switches. ROPS would provide maximum protection in the event of a roll over. The monitor features a full-color graphical display that is easy to see and use. Overall, the new cab provides you with a comfortable working environment for maximum production and efficiency.

Reduced Service and Maintenance Cost

Routine service and maintenance can be completed quickly and easily to help you reduce ownership costs. Convenient access points, extended service intervals, and advanced filtration help keep downtime to a minimum.

Complete Customer Support

Your Cat dealer offers a wide range of services that can be set up under a customer support agreement when you purchase your equipment.

Cat 349D2 L Total Solutions

Caterpillar and its extensive dealer network offer a wide variety of solutions designed to meet the unique needs of your business.

Contents

| | |
|------------------------------------|----|
| Operator Station..... | 4 |
| Engine | 6 |
| Hydraulics | 7 |
| Structures and Undercarriage | 8 |
| Front Linkage | 9 |
| Service and Maintenance | 10 |
| Complete Customer Support..... | 11 |
| Work Tools..... | 12 |
| Integrated Technologies..... | 14 |
| Specifications..... | 15 |
| Standard Equipment..... | 28 |
| Optional Equipment..... | 29 |
| Notes..... | 30 |





The 349D2 L offers outstanding performance, excellent control, high stick and bucket forces, impressive lift capacity, simplified service and a comfortable operator station to increase your productivity and lower operating costs.

Operator Station

Comfort and convenience to keep you productive



Operator Station

The ergonomically designed operator station is spacious, quiet, and comfortable, assuring high productivity during a long work day. All switches are located in front of the operator for convenient access.

Cab Structure and Mounts

The cab shell is attached to the frame with viscous rubber mounts, which dampen vibrations and sound levels while enhancing your comfort. Thick steel tubing along the bottom perimeter improves the cab's resistance to fatigue and vibration.

Cab Exterior – Roll Over Protective Structure (ROPS)

The 349D2 L features a ROPS (Roll Over Protective Structure) compliant cab structure as standard. This design also allows for a Falling Object Guard System (FOGS) or front windshield guard to be bolted directly to the cab, either at the factory or in the field, enabling the machine to meet all job site requirements.

- More glass versus previous non-ROPS cab to improve visibility
- Volume increase: more interior head room space
- Improved cab pressurization
- ROPS cab air filter accessible at ground level

Seat

The suspension seat provides a variety of adjustments to accommodate a wide range of operators. The seat includes a reclining back, upper and lower seat slide adjustments, and height and tilt adjustments to meet your needs for comfort and productivity.

Monitor

The monitor is a full-color Liquid Crystal Display (LCD) that has the capability of displaying information in 28 languages.

Joystick Control and Console

Low-effort pilot-operated joystick controls are designed to match your natural wrist and arm position for maximum comfort and minimum fatigue. The right and left joystick console can be adjusted to meet your individual preferences, improving overall comfort and productivity during the course of a long work day.

Climate Control

Positive filtered ventilation with a pressurized cab is standard. Fresh air or re-circulated air can be selected with a switch on the left console.

Windows and Wipers

All glass is affixed directly to the cab to maximize visibility, eliminating window frames. The upper front windshield opens, closes, and stores on the roof above the operator with a one-touch action release system. Pillar-mounted wipers increase your viewing area and offer continuous and intermittent modes.





Turbocharger

The Cat C13 ACERT uses a wastegate turbocharger for improved performance.

- The wastegate valve controls excessive engine boost pressure by allowing exhaust to bypass the exhaust-side turbine.
- The wastegate also reduces turbine wear in high RPM; low load conditions and optimizes air and fuel delivery for peak engine performance.
- The turbocharger increases the density of the air, enabling the engine to produce more power with few effects from altitude.

Engine

Engineered to lower your operating costs

349D2 L owning and operation costs have been reduced by reverting to optimized Economy Mode each time the machine is started regardless of what mode the operator had previously selected. This will help to reduce fuel consumption up to 9 percent than its predecessor moving the same amount of material.

Emission Standards

The Cat C13 ACERT engine incorporates proven robust components and precision manufacturing you can count on for reliable and efficient operation.

Fuel System

The Cat C13 ACERT features electronic controls that govern the mechanically actuated unit fuel injection (MEUI™) system. MEUI provides the high-pressure required to deliver better fuel economy through finer fuel atomization and more complete combustion.

ADEM™ A4 Engine Controller

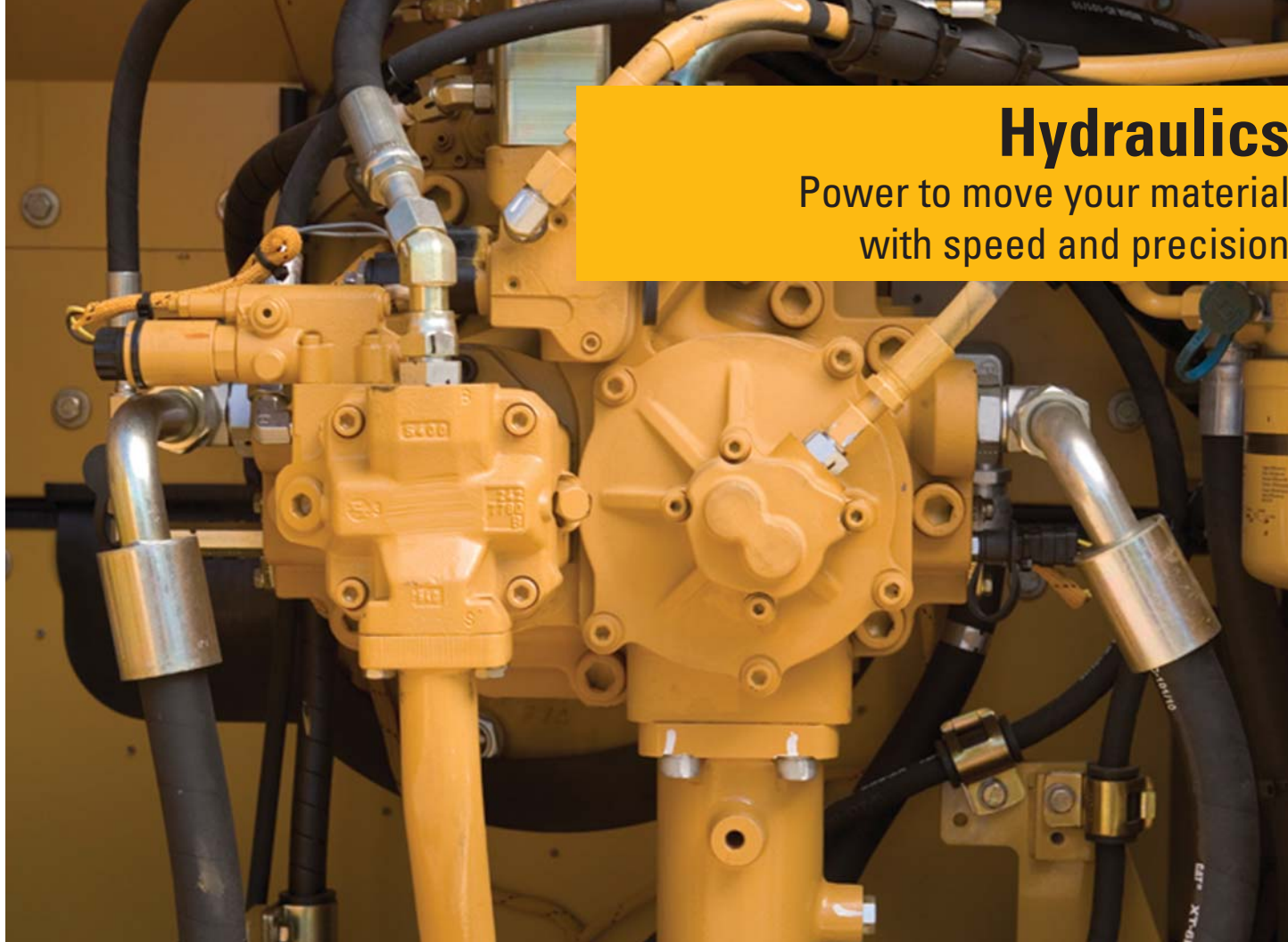
The ADEM A4 electronic control module manages fuel delivery to get the best performance per liter of fuel used. The engine management system provides flexible fuel mapping, allowing the engine to respond quickly to varying application needs. It tracks engine and machine conditions while keeping the engine operating at peak efficiency.

Air Cleaner

The radial seal air filter features a double-layered filter core for more efficient filtration and is located in a compartment behind the cab. A warning is displayed on the monitor when dust accumulates above a preset level.

Low Sound and Vibration Levels

The engine mounts are rubber-isolating mounts matched with the engine package to provide optimum sound and vibration reduction. Further noise reduction has been achieved through design changes to the isolated top cover, oil pan, multiple injection strategy, insulated timing cover, sculpted crankcase.



Hydraulics

Power to move your material
with speed and precision

Pilot System

An independent pilot pump enables smooth, precise control for the front linkage, swing, and travel operations.

Component Layout

The component location and hydraulic system design provide the highest level of system efficiency. The main pumps, control valve and hydraulic tank are located as close to each other as possible. This design makes it possible to use shorter tubes and lines between components, reducing friction losses and pressure drops.

Hydraulic Cross-Sensing System

The hydraulic cross sensing system utilizes each of two hydraulic pumps to 100 percent of engine power under all operating conditions. This improves productivity with faster implement speeds and quicker, stronger pivot turns.

Boom and Stick Regeneration Circuits

A hydraulically operated stick regeneration circuit saves energy and improves multi-function performance during the stick-in operation. The boom regeneration circuit is operated electrically, and this system is managed by the machine ECM. The system improves cycle times and fuel efficiency, increasing your productivity and reducing operating costs.

Boom and Swing Priority

The hydraulic system on the 349D2 L provides automatic priority function for boom-up and swing operations eliminating the need for work mode buttons. When the boom or swing lever is activated, the system automatically assigns priority based on operator demand.

Hydraulic Cylinder Snubbers

Snubbers are located at the rod-end of the boom cylinders and both ends of the stick cylinders to cushion shocks while reducing sound levels and extending component and structure life.

Structures and Undercarriage

Designed to work in your tough, heavy-duty applications



Main Frame

The X-shaped, box-section carbody provides excellent resistance to torsional bending, and press-formed, robot-welded track roller frames provide exceptional strength and durability.

Rollers and Idlers

Sealed and lubricated track rollers, carrier rollers, and idlers provide excellent service life to keep your machine in the field and working longer.

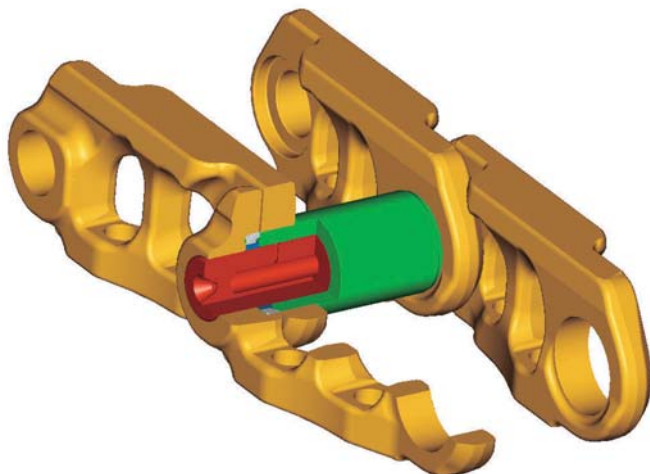
Track Roller Frame

Fixed Gauge Undercarriage

- Uses a press-formed, pentagonal section for the track frame that is robot-welded for weld consistency and quality. The track frame has been designed so that the top of the track frame has a steep angle to help prevent accumulation of mud and debris.

Counterweights

The standard 9.0 mt (9.9 t) counterweight maintains large lifting capacity and excellent stability. It's bolted directly to the main frame for extra rigidity.



Track

Durable Cat undercarriage absorbs stress and provides excellent stability. The 349D2 L comes standard with grease lubricated tracks. The track links are assembled and sealed with grease to decrease internal bushing wear, reduce travel noise and extend service life lowering operating costs.

Front Linkage

Options to take on your far-reaching or up-close tasks

Booms and Sticks

The 349D2 L is offered with a range of booms and sticks. Each is built with internal baffle plates and stress-relieved for added durability, and each undergoes ultrasound inspection to ensure quality and reliability. Large box-section structures with thick, multi-plate fabrications, castings, and forgings are used in high-stress areas such as the boom nose, boom foot, boom cylinder, and stick foot to improve durability. Also, the boom nose pin retention method is a captured flag design for enhanced durability.

Reach Front Linkage*

The Reach boom is designed to balance reach, digging force bucket capacity, offering a wide range of applications as digging, loading and trenching.

There are three reach stick options available to meet all your application requirements:

- The 2.9 m (9'6") stick is best used when you are working primarily in truck loading applications to maximize your breakout force and increase your bucket fill factor.
- The 3.35 m (11'0") stick is a versatile option that will meet the needs for most of your construction applications.
- The 3.9 m (12'10") stick is a great choice when you need additional working range like truck loading and deep trenching.



Mass Front Linkage*

The mass excavation (ME) front linkage is designed to maximize machine performance through superior digging forces and a larger bucket capacity. The 6.55 m (21'6") mass excavation boom is reinforced with a large cross section for longer life and durability.

The ME boom has two stick options to meet your demanding applications:

- The 2.5 m (8'2") ME stick is best for bench loading. This option also provides better breakout force for ripper and is ideal for hammer applications.
- The 3.0 m (9'10") ME stick is best when you primarily use high-capacity buckets in truck loading applications to maximize your breakout force.

*All booms and sticks have baffle plates.

Service and Maintenance

Designed to make your maintenance quick and easy

Extended Service Intervals

Extended service and maintenance intervals increase machine availability. The maintenance intervals for engine oil and engine oil filter have been extended to 500 hours.

Capsule Filter

The hydraulic return filters are located in the hydraulic tank. The filter elements are removable without spilling hydraulic oil.

Pilot Hydraulic System Filter

Pilot hydraulic system filter keeps contaminants from the pilot system and is located in the pump compartment.

Radial Seal Main Air Cleaner

Radial seal main air cleaner with precleaner has a double-layered filter element for more efficient filtration. No tools are required to change the element.

Fuel-Water Separator

The water separator has a primary fuel filter element and is located in the air cleaner compartment for easy access from the ground.

Service Points

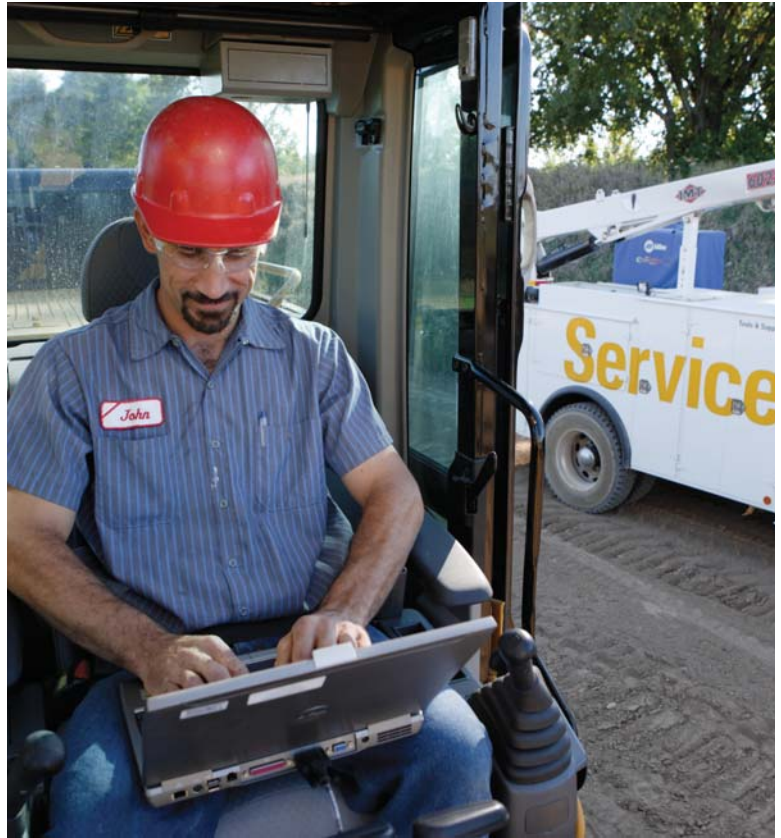
Service points are centrally located with easy access to facilitate routine maintenance.

Oil Sample and Pressure Ports

Oil sample and pressure ports provide easy checking of machine condition and are standard on every machine.

Greasing Points

A concentrated remote greasing block on the boom delivers grease to hard-to-reach locations.





Complete Customer Support

Support you can count on

Product Support

Cat dealers utilize a worldwide computer network to find in-stock parts to minimize machine downtime. You can also save money with our line of remanufactured components.

Machine Selection

Your Cat dealers can provide specific recommendations with detailed comparisons of the Cat machines you are considering before you buy. This ensures you get the right size machine and appropriate work tools to meet all of your application needs.

Maintenance Services

Repair option programs guarantee the cost of repairs up front. Condition monitoring services and diagnostic programs such as scheduled oil sampling, coolant sampling, and technical analysis help you avoid unscheduled repairs.

Customer Support Agreements

Cat dealers offer a variety of product support agreements that can be tailored to meet your specific needs. These plans can cover the entire machine – including attachments – to help protect your investment.

Replacement

Repair, rebuild, or replace? Your Cat dealers can help you evaluate the costs involved so you can make the right choice.

Work Tools

Tools to make you productive and profitable



1



2



3



4



5

Versatility and Performance

Each Cat work tool is designed to optimize the versatility and performance of your machine. An extensive range of buckets, compactors, grapples, multi-processors, rippers, crushers, pulverizers, hammers, and shears is available for your 349D2 L.

Buckets and GET

Cat buckets and Cat Ground Engaging Tools (GET) are designed and matched to the machine to ensure optimal performance and fuel efficiency.

Utility Buckets (UD)

UD buckets are for digging in low-impact, low-abrasive material such as dirt, loam, and clay.

General-Duty Buckets (GD)

GD buckets are for digging in low-impact, moderately abrasive materials such as dirt, loam, gravel, and clay.

Heavy-Duty Buckets (HD)

HD buckets are a good starting point when application conditions vary – especially when conditions include mixed dirt, clay, sand, and gravel.

Severe-Duty Buckets (SD)

SD buckets are best suited to highly abrasive materials like shot rock, sand stone, and granite.

Extreme-Duty Buckets (XD)

XD buckets are for extremely abrasive materials like high-quartzite granite.

- 1) Utility Buckets (UD)
- 2) General-Duty Buckets (GD)
- 3) Heavy-Duty Buckets (HD)
- 4) Severe-Duty Buckets (SD)
- 5) Extreme-Duty Buckets (XD)

Couplers

Quick couplers allow one person to change work tools in seconds for maximum performance and flexibility on a job site. One machine can move rapidly from task to task, and a fleet of similarly equipped machines can share a common work tool inventory.

Center-Lock™ Pin Grabber Coupler

Center-Lock is a pin grabber coupler and features a patent-pending locking system. A highly visible secondary lock clearly shows the operator when the coupler is engaged or disengaged from the bucket or work tool.

E Series Hammers

E Series hammers bring together customer expectations for performance, quality, and serviceability along with Caterpillar manufacturing expertise. They are also quiet – a significant benefit in urban and noise-restricted work areas.

Rippers

Constructed from high-strength steels and built to last, Cat rippers endure in the toughest conditions. The box-section structure is reinforced for maximum rigidity, transmitting the full machine power to the material being ripped. Rippers feature a replaceable wear tip, and most models also come equipped with a replaceable shank protector.

Grapples

Cat grapples make Cat excavators the ideal machine for handling loose material, sorting trash, and demolition site cleanup. An array of styles and sizes is available to match excavators to the task at hand.

Multi-Processors

Multi-processors do the work of many types of demolition tools by use of interchangeable jaw sets. Changing jaws allows a single unit to crush, pulverize, and perform a variety of specialized tasks such as cutting steel rebar and tanks.

Shears

Cat shears are designed to take full advantage of the hydraulic flows and pressures produced by Cat excavators – all to enhance productivity without compromising safety or causing premature wear of the shear or carrier.

Pulverizers

Mechanical pulverizers are cost-effective tools for recycling demolished concrete debris. The bucket cylinder on the excavator powers the pulverizer, eliminating the need for a dedicated cylinder, associated hydraulics, and additional installation cost.

Compactors

Cat compactors make job site compaction quick, efficient, and cost effective.

Crushers

The hydraulic concrete crusher is well suited for demolition in residential areas. The tool combines several demolition operations in one piece of equipment:

- Breaking out concrete from fixed structures
- Pulverizing concrete
- Cutting reinforcement rods and small steel profiles



Integrated Technologies

Monitor, manage, and enhance job site operations



Cat Connect makes smart use of technology and services to improve your job site efficiency. Using the data from technology-equipped machines, you'll get more information and insight into your equipment and operations than ever before.

Cat Connect technologies offers improvements in these key areas:



EQUIPMENT
MANAGEMENT

Equipment Management – increase uptime and reduce operating costs.



PRODUCTIVITY

Productivity – monitor production and manage job site efficiency.



SAFETY

Safety – enhance job site awareness to keep your people and equipment safe.

LINK Technologies

LINK technologies like Product Link™ wirelessly connect you to your equipment, giving you valuable insight into how your machine or fleet is performing. Track location, hours, fuel usage, idle time, and event codes through the online VisionLink® interface so you can make timely, fact-based decisions that can boost job site efficiency and productivity, and lower operating costs.

GRADE Technologies

GRADE technologies like the AccuGrade™ system provide 3D bucket tip position and elevation guidance through the in-cab display indicating precisely where to work and how much to cut or fill. AccuGrade reduces the need for grade staking and checking, decreases labor costs, and improves job site safety.

DETECT Technologies

DETECT technologies like the rear-vision camera enhance operator awareness by expanding your view of the environment around working equipment. Work with greater confidence and at peak potential while keeping people and assets safe.

349D2 L Hydraulic Excavator Specifications

Engine

| | | |
|--------------------------------|---------------|---------------------|
| Engine Model | Cat C13 ACERT | |
| Engine Power (ISO 14396) | 301 kW | 403 hp |
| Net Power (SAE J1349/ISO 9249) | 289 kW | 387 hp |
| Bore | 130 mm | 5.11 in |
| Stroke | 157 mm | 6.18 in |
| Displacement | 12.5 L | 762 in ³ |

- The Cat C13 ACERT meets exhaust emissions equivalent to U.S. EPA Tier 3, EU Stage IIIA equivalent emission standards.
- Net power advertised is the power available at the flywheel when the engine is equipped with fan, air cleaner, muffler, and alternator.
- The field-proven C13 ACERT engine can work efficiently at altitudes up to 2300 m (7,500 ft).

Weights

| | | |
|---------------------|-----------|------------|
| Operating Weight | | |
| Long Undercarriage* | 48 185 kg | 106,200 lb |

*Long Undercarriage: Counterweight – 9.0 mt (9.9 t),
 Mass Boom – 6.55 m (21'6"), Stick – M3.0 m (9'10"),
 Track Shoe – Long Fixed Gauge, 900 mm (35 in) Triple Grouser,
 Bucket – UB2.4 m³ (3.16 yd³)

Track

| | | |
|---------------------------------------|----|--|
| Number of Shoes (each side) | | |
| Long – Fixed | 52 | |
| Number of Track Rollers (each side) | | |
| Long – Fixed | 9 | |
| Number of Carrier Rollers (each side) | | |
| Long – Fixed | 2 | |

Swing Mechanism

| | | |
|--------------|----------|----------------|
| Swing Speed | 8.7 rpm | |
| Swing Torque | 149 kN·m | 109,896 lbf-ft |

Drive

| | | |
|----------------------|----------|------------|
| Maximum Travel Speed | 4.5 km/h | 2.7 mph |
| Maximum Drawbar Pull | 338 kN | 75,985 lbf |

Hydraulic System

| | | |
|------------------------------------|------------|----------------------------|
| Main System – Maximum Flow (Total) | 734 L/min | 193 gal/min |
| Maximum Pressure – Equipment | 35 000 kPa | 5,076 psi |
| Maximum Pressure – Travel | 35 000 kPa | 5,076 psi |
| Maximum Pressure – Swing | 31 400 kPa | 4,554 psi |
| Pilot System – Maximum Flow | 43 L/min | 11.3 gal/min |
| Pilot System – Maximum Flow | 43 L/min | 2,623 in ³ /min |
| Pilot System – Maximum Pressure | 4110 kPa | 596 psi |
| Boom Cylinder – Bore | 160 mm | 6.0 in |
| Boom Cylinder – Stroke | 1575 mm | 62.0 in |
| Stick Cylinder – Bore | 190 mm | 7.0 in |
| Stick Cylinder – Stroke | 1778 mm | 70.0 in |
| TB Bucket Cylinder – Bore | 160 mm | 6.0 in |
| TB Bucket Cylinder – Stroke | 1356 mm | 53.0 in |
| UB Bucket Cylinder – Bore | 170 mm | 6.0 in |
| UB Bucket Cylinder – Stroke | 1396 mm | 55.0 in |

Service Refill Capacities

| | | |
|-----------------------------------|--------|---------|
| Fuel Tank Capacity | 705 L | 186 gal |
| Cooling System | 35.5 L | 9 gal |
| Engine Oil (with filter) | 42 L | 11 gal |
| Swing Drive (each) | 10 L | 2 gal |
| Final Drive (each) | 15 L | 3 gal |
| Hydraulic System (including tank) | 570 L | 150 gal |
| Hydraulic Tank | 243 L | 64 gal |

Sound Performance

| | |
|-----------------------------|---|
| Performance | ANSI/SAE J1166 MAY90 Meets OSHA and MSHA Requirements |
| Operator Sound (ISO 6396)* | 72 dB(A) |
| Spectator Sound (ISO 6395)* | 105 dB(A) |

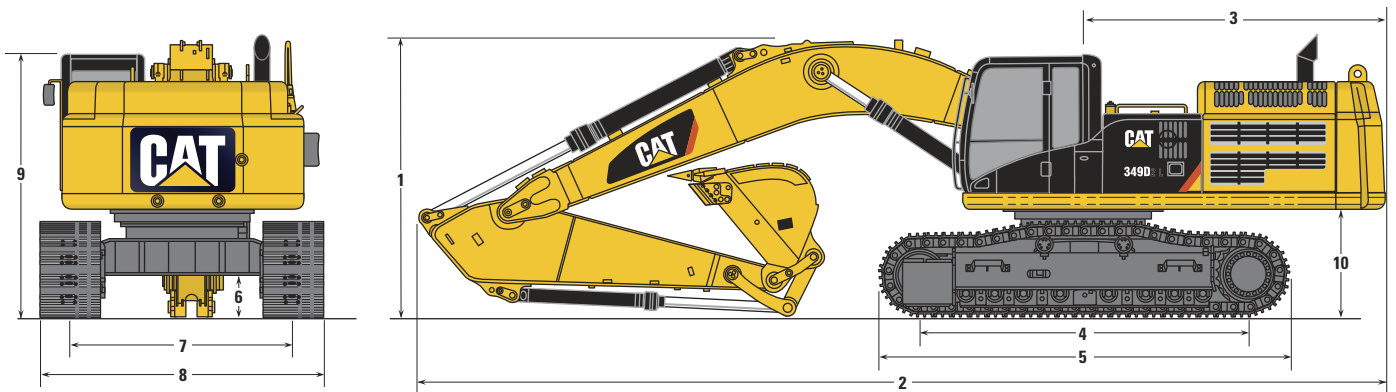
*For Turkey/Korea/Hong Kong model meets EU Stage II Sound Regulation

- When properly installed and maintained, the cab offered by Caterpillar, when tested with doors and windows closed according to ISO 6396, meets requirements for operator sound exposure limits in effect at time of manufacture.
- Hearing protection may be needed when operating with an open operator station and cab (when not properly maintained or doors/windows open) for extended periods or in noisy environment.

349D2 L Hydraulic Excavator Specifications

Dimensions

All dimensions are approximate.



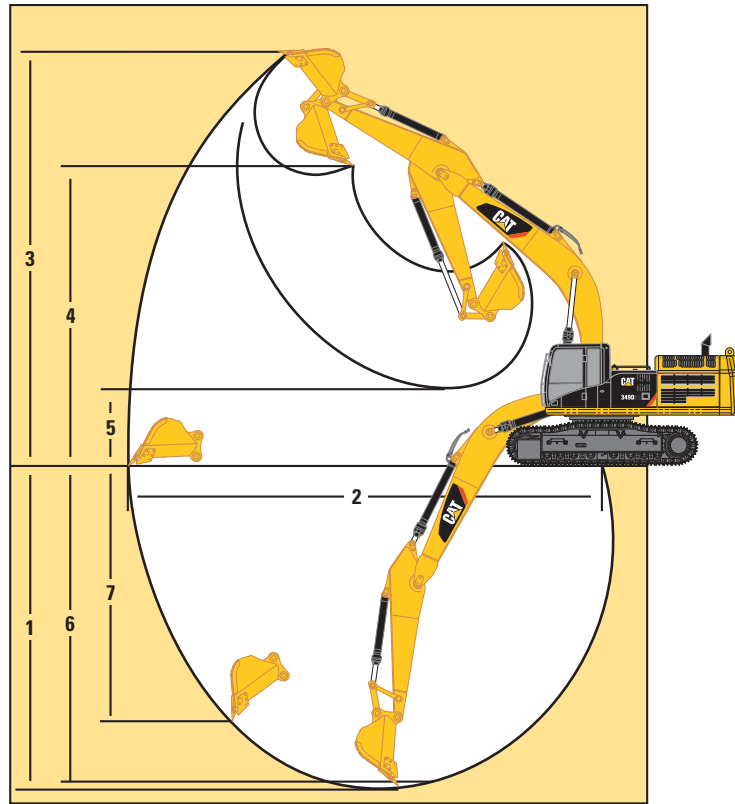
| Boom Options | Reach Boom 6.9 m (22'8") | | | Mass Boom 6.55 m (21'6") | |
|---|-----------------------------|--------------------|--------------------|-----------------------------|-------------------|
| Stick Options | R2.9TB (9'6") | R3.35TB (11'0") | R3.9TB (12'10") | M2.5UB (8'2") | M3.0UB (9'10") |
| | mm (ft) | mm (ft) | mm (ft) | mm (ft) | mm (ft) |
| 1 Shipping Height | 3700 (12'2") | 3550 (11'6") | 3700 (12'1") | 3960 (13'0") | 3990 (13'1") |
| 2 Shipping Length | 11 870 (38'11") | 11 890 (39'0") | 11 890 (39'0") | 11 630 (38'2") | 11 550 (37'9") |
| 3 Tail Swing Radius | 3690 (12'1") | 3690 (12'1") | 3690 (12'1") | 3690 (12'1") | 3690 (12'1") |
| 4 Length to Center of Idler and Sprocket | | | | | |
| Long Fix Undercarriage | 4360 (14'4") | 4360 (14'4") | 4360 (14'4") | 4360 (14'4") | 4360 (14'4") |
| 5 Track Length | | | | | |
| Long Fix Undercarriage | 5370 (17'6") | 5370 (17'6") | 5370 (17'6") | 5370 (17'6") | 5370 (17'6") |
| 6 Ground Clearance* | | | | | |
| Long Fix Undercarriage | 510 (1'8") | 510 (1'8") | 510 (1'8") | 510 (1'8") | 510 (1'8") |
| 7 Track Gauge | | | | | |
| Long Fix Undercarriage | 2740 (9'0") | 2740 (9'0") | 2740 (9'0") | 2740 (9'0") | 2740 (9'0") |
| 8 Transport Width | | | | | |
| Long Fix Undercarriage | | | | | |
| 600 mm (24 in) Shoes | 3430 (11'3") | 3430 (11'3") | 3430 (11'3") | 3430 (11'3") | 3430 (11'3") |
| 750 mm (30 in) Shoes | 3490 (11'5") | 3490 (11'5") | 3490 (11'5") | 3490 (11'5") | 3490 (11'5") |
| 900 mm (35 in) Shoes | 3640 (11'11") | 3640 (11'11") | 3640 (11'11") | 3640 (11'11") | 3640 (11'11") |
| 9 Cab Height | | | | | |
| Long Fix Undercarriage | 3220 (10'6") | 3220 (10'6") | 3220 (10'6") | 3220 (10'6") | 3220 (10'6") |
| 10 Counterweight Clearance** | | | | | |
| Long Fix Undercarriage | 1280 (4'2") | 1280 (4'2") | 1280 (4'2") | 1280 (4'2") | 1280 (4'2") |

*Including shoe lug height.

**Without shoe lug height.

349D2 L Hydraulic Excavator Specifications

Working Ranges



| Boom Options | Reach Boom 6.9 m (22'8") | | | Mass Boom 6.55 m (21'6") | |
|---|-----------------------------|--------------------|--------------------|-----------------------------|-------------------|
| | R2.9TB (9'6") | R3.35TB (11'0") | R3.9TB (12'10") | M2.5UB (8'2") | M3.0UB (9'10") |
| Stick Options | mm (ft) | mm (ft) | mm (ft) | mm (ft) | mm (ft) |
| 1 Maximum Digging Depth | 7150 (23'5") | 7600 (24'11") | 8150 (26'9") | 6720 (22'1") | 7220 (23'8") |
| 2 Maximum Reach at Ground Level | 11 240 (36'11") | 11 660 (38'3") | 12 080 (39'8") | 10 710 (35'2") | 11 180 (36'8") |
| 3 Maximum Cutting Height | 10 620 (34'10") | 10 800 (35'5") | 10 710 (35'2") | 10 230 (33'7") | 10 420 (34'2") |
| 4 Maximum Loading Height | 7290 (23'11") | 7470 (24'6") | 7450 (24'5") | 6620 (21'9") | 6810 (22'4") |
| 5 Minimum Loading Height | 3250 (10'8") | 2800 (9'2") | 2250 (7'5") | 3160 (10'4") | 2660 (8'9") |
| 6 Maximum Depth Cut for 2440 mm (8'0") Level Bottom | 6990 (22'11") | 7460 (24'6") | 8020 (26'4") | 6550 (21'6") | 7070 (23'2") |
| 7 Maximum Vertical Wall Digging Depth | 5870 (19'3") | 6300 (20'8") | 6460 (21'2") | 4920 (16'2") | 5380 (17'8") |

349D2 L Hydraulic Excavator Specifications

Operating Weight and Ground Pressure

| | 600 mm (24 in) Double Grouser Shoes | | 600 mm (24 in) Triple Grouser Shoes | | 750 mm (30 in) Double Grouser Shoes | | 750 mm (30 in) Triple Grouser Shoes | | 900 mm (35 in) Triple Grouser Shoes | |
|-------------------------------|---|-----------------|---|-----------------|---|----------------|---|----------------|---|----------------|
| | kg (lb) | kPa (psi) | kg (lb) | kPa (psi) | kg (lb) | kPa (psi) | kg (lb) | kPa (psi) | kg (lb) | kPa (psi) |
| Long Fix Undercarriage | | | | | | | | | | |
| Reach Boom – 6.9 m (22'8") | | | | | | | | | | |
| R2.9TB (9'6") | 44 500 (98,100) | 77.2 (11.19) | 44 400 (97,900) | 77.0 (11.16) | 44 500 (98,100) | 61.8 (8.95) | 45 200 (99,600) | 62.6 (9.09) | 45 900 (101,200) | 53.1 (7.69) |
| R3.35TB (11'0") | 44 400 (97,900) | 77.1 (11.16) | 44 300 (97,700) | 76.9 (11.14) | 44 500 (98,100) | 61.7 (8.95) | 45 100 (99,400) | 62.5 (9.07) | 45 800 (101,000) | 53.0 (7.67) |
| R3.9TB (12'10") | 44 400 (97,900) | 77.0 (11.16) | 44 300 (97,700) | 76.8 (11.14) | 44 500 (98,100) | 61.7 (8.95) | 45 100 (99,400) | 62.5 (9.07) | 45 800 (101,000) | 53.0 (7.67) |
| Mass Boom – 6.55 m (21'6") | | | | | | | | | | |
| M2.5UB (8'2") | 45 800 (101,000) | 79.4 (11.51) | 45 700 (100,800) | 79.2 (11.49) | 45 800 (101,000) | 63.6 (9.21) | 46 400 (102,300) | 64.4 (9.35) | 47 200 (104,100) | 54.5 (7.91) |
| M3.0UB (9'10") | 45 900 (101,200) | 79.5 (11.54) | 45 800 (101,000) | 79.4 (11.51) | 45 900 (101,200) | 63.7 (9.23) | 46 500 (102,500) | 64.5 (9.35) | 47 300 (104,300) | 54.6 (7.93) |

349D2 L Hydraulic Excavator Specifications

Major Component Weights*

| | kg (lb) |
|---|-----------------|
| Base Machine (with boom cylinder, without counterweight, front linkage and track) | |
| Long Fix Undercarriage | 23 001 (50,700) |
| Counterweight | |
| 9.0 mt (9.9 t) | 9000 (19,800) |
| Boom (includes lines, pins and stick cylinder) | |
| Reach Boom – 6.9 m (22'8") | 4081 (9,000) |
| Mass Boom – 6.55 m (21'6") | 4602 (10,100) |
| Stick (includes lines, pins and bucket cylinder) | |
| R2.9TB (9'6") | 1952 (4,300) |
| R3.35TB (11'0") | 1994 (4,400) |
| R3.9TB (12'10") | 2119 (4,700) |
| M2.5UB (8'2") | 2189 (4,800) |
| M3.0UB (9'10") | 2370 (5,200) |
| Track Shoe (Standard Undercarriage/per two tracks) | |
| 750 mm (30 in) Triple Grouser Shoes | 5529 (12,200) |
| Track Shoe (Long Fix Undercarriage/per two tracks) | |
| 600 mm (24 in) Double Grouser Shoes | 5222 (11,500) |
| 600 mm (24 in) Triple Grouser Shoes | 5117 (11,300) |
| 750 mm (30 in) Double Grouser Shoes | 6006 (13,200) |
| 750 mm (30 in) Triple Grouser Shoes | 5868 (12,900) |
| 900 mm (35 in) Triple Grouser Shoes | 6620 (14,600) |
| Buckets | |
| TB1758X – 2.2 m ³ (2.88 yd ³) | 1922 (4,200) |
| UB1729X – 2.4 m ³ (3.16 yd ³) | 2326 (5,100) |

*Base machine includes 75 kg (165 lb) operator weight, 90% fuel weight, and undercarriage with center guard.

Note: All weights are rounded up to nearest 10 kg and lb except for quick coupler and buckets.

Kg and lb were rounded up separately so some of the kg and lb do not match.

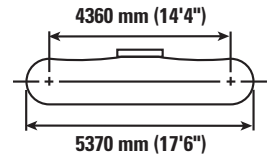
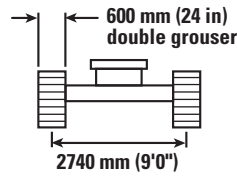
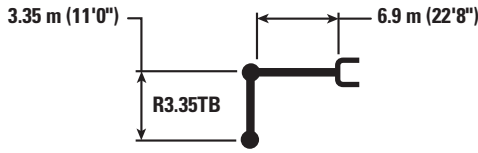
349D2 L Hydraulic Excavator Specifications

Bucket and Stick Forces

| Reach Boom 6.9 m (22'8") | R3.9TB (12'10") | | R3.35TB (11'0") | | R2.9TB (9'6") | |
|---------------------------------|-----------------|----------|-----------------|----------|---------------|----------|
| | kN | (lbf) | kN | (lbf) | kN | (lbf) |
| TB-Family Bucket | | | | | | |
| Heavy Duty | | | | | | |
| Bucket Digging Force (ISO) | 267 | (60,100) | 267 | (60,100) | 267 | (60,100) |
| Stick Digging Force (ISO) | 184 | (41,400) | 201 | (45,200) | 221 | (49,600) |
| Bucket Digging Force (SAE) | 238 | (53,500) | 238 | (53,500) | 238 | (53,500) |
| Stick Digging Force (SAE) | 180 | (40,400) | 195 | (43,900) | 214 | (48,100) |
| Severe Duty | | | | | | |
| Bucket Digging Force (ISO) | 267 | (60,100) | 267 | (60,100) | 267 | (60,100) |
| Stick Digging Force (ISO) | 184 | (41,400) | 201 | (45,200) | 221 | (49,600) |
| Bucket Digging Force (SAE) | 238 | (53,500) | 238 | (53,500) | 238 | (53,500) |
| Stick Digging Force (SAE) | 180 | (40,400) | 195 | (43,900) | 214 | (48,100) |
| Mass Boom 6.55 m (21'6") | | | | | | |
| | M3.0UB (9'10") | | M2.5UB (8'2") | | | |
| | kN | (lbf) | kN | (lbf) | | |
| UB-Family Bucket | | | | | | |
| General Duty | | | | | | |
| Bucket Digging Force (ISO) | 298 | (66,900) | 298 | (66,900) | | |
| Stick Digging Force (ISO) | 211 | (47,300) | 239 | (53,700) | | |
| Bucket Digging Force (SAE) | 258 | (57,900) | 258 | (57,900) | | |
| Stick Digging Force (SAE) | 201 | (45,200) | 226 | (50,900) | | |
| Heavy Duty | | | | | | |
| Bucket Digging Force (ISO) | 295 | (66,300) | 295 | (66,300) | | |
| Stick Digging Force (ISO) | 210 | (47,200) | 238 | (53,500) | | |
| Bucket Digging Force (SAE) | 256 | (57,400) | 256 | (57,400) | | |
| Stick Digging Force (SAE) | 200 | (45,000) | 226 | (50,700) | | |
| Severe Duty | | | | | | |
| Bucket Digging Force (ISO) | 290 | (65,200) | 290 | (65,200) | | |
| Stick Digging Force (ISO) | 211 | (47,500) | 239 | (53,800) | | |
| Bucket Digging Force (SAE) | 252 | (56,600) | 252 | (56,600) | | |
| Stick Digging Force (SAE) | 203 | (45,700) | 229 | (51,500) | | |

349D2 L Hydraulic Excavator Specifications

Reach Boom (Long Fix Undercarriage) Lift Capacities – Counterweight: 9.0 mt (9.9 t) – Heavy Lift: Off



| | | 3.0 m/10.0 ft | | 4.5 m/15.0 ft | | 6.0 m/20.0 ft | | 7.5 m/25.0 ft | | 9.0 m/30.0 ft | | m ft | | |
|--------------------|----------|---------------------------|---------------------------|---------------------------|---------------------------|---------------------------|---------------------------|---------------------------|---------------------------|---------------------------|-----------------------|---------------------------|-------------------------|---------------------|
| | | | | | | | | | | | | | | |
| 9.0 m 30.0 ft | kg lb | | | | | | | | | | | *8300 *18,450 | *8300 *18,450 | 7.3 24.0 |
| 7.5 m 25.0 ft | kg lb | | | | | | | *9950 *21,850 | *9950 *21,850 | | | *7800 *17,250 | *7800 *17,250 | 8.5 28.0 |
| 6.0 m 20.0 ft | kg lb | | | | | | | *10 400 *22,650 | *10 400 *22,650 | *9750 *18,650 | 7850 16,800 | *7650 *16,900 | 7450 16,500 | 9.3 31.0 |
| 4.5 m 15.0 ft | kg lb | | | *17 350 *37,250 | *17 350 *37,250 | *13 300 *28,750 | *13 300 *28,750 | *11 250 *24,400 | 10 200 21,950 | *10 050 *21,900 | 7700 16,500 | *7750 *17,050 | 6700 14,800 | 9.8 32.0 |
| 3.0 m 10.0 ft | kg lb | | | *21 250 *45,650 | 20 150 43,550 | *15 200 *32,750 | 13 400 28,900 | *12 250 *26,500 | 9750 21,000 | *10 500 *22,850 | 7450 16,000 | *8100 *17,750 | 6300 13,900 | 10.0 33.0 |
| 1.5 m 5.0 ft | kg lb | | | *17 600 *42,150 | *17 600 40,850 | *16 600 *35,900 | 12 700 27,400 | *13 050 *28,300 | 9350 20,100 | *10 950 *23,700 | 7200 15,550 | *8650 *19,000 | 6150 13,600 | 10.0 33.0 |
| 0 m 0 ft | kg lb | | | *19 850 *46,050 | 18 550 39,900 | *17 250 *37,300 | 12 250 26,450 | *13 500 *29,250 | 9050 19,500 | *11 100 *24,000 | 7050 15,200 | *9550 *21,050 | 6300 13,800 | 9.8 32.0 |
| -1.5 m -5.0 ft | kg lb | *14 100 *31,900 | *14 100 *31,900 | *22 350 *48,550 | 18 500 39,750 | *16 950 *36,750 | 12 100 26,050 | *13 350 *28,900 | 8900 19,200 | *10 700 *23,050 | 7000 15,100 | *10 150 *22,350 | 6700 14,750 | 9.3 31.0 |
| -3.0 m -10.0 ft | kg lb | *22 600 *51,000 | *22 600 *51,000 | *20 300 *43,950 | 18 700 40,150 | *15 750 *34,050 | 12 150 26,150 | *12 400 *26,600 | 8950 19,250 | | | *10 200 *22,400 | 7550 16,700 | 8.6 28.0 |
| -4.5 m -15.0 ft | kg lb | *21 200 *45,650 | *21 200 *45,650 | *16 850 *36,200 | *16 850 *36,200 | *13 200 *28,200 | 12 400 26,750 | | | | | *9850 *21,650 | 9350 20,850 | 7.4 24.0 |



ISO 10567



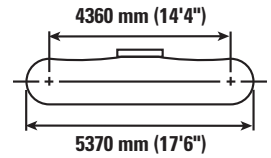
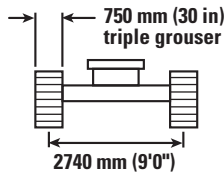
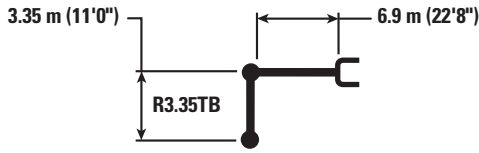
*Indicates that the load is limited by hydraulic lifting capacity rather than tipping load. The above loads are in compliance with hydraulic excavator lift capacity standard ISO 10567:2007. They do not exceed 87% of hydraulic lifting capacity or 75% of tipping load. Weight of all lifting accessories must be deducted from the above lifting capacities. Lifting capacities are based on the machine standing on a firm, uniform supporting surface. The use of a work tool attachment point to handle/lift objects, could affect the machine lift performance.

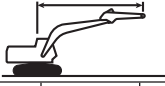



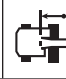
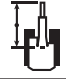







Lift capacity stays with ±5% for all available track shoes.

Always refer to the appropriate Operation and Maintenance Manual for specific product information.

349D2 L Hydraulic Excavator Specifications

Reach Boom (Long Fix Undercarriage) Lift Capacities – Counterweight: 9.0 mt (9.9 t) – Heavy Lift: Off



| | | 3.0 m/10.0 ft | | 4.5 m/15.0 ft | | 6.0 m/20.0 ft | | 7.5 m/25.0 ft | | 9.0 m/30.0 ft | |  | | |
|--------------------|----------|---|---|---|---|---|---|---|--|---|---|---|---|--------------|
| | |  |  |  |  |  |  |  |  |  |  |  |  | m ft |
| 9.0 m 30.0 ft | kg lb | | | | | | | | | | | *8300 *18,450 | *8300 *18,450 | 7.3 24.0 |
| 7.5 m 25.0 ft | kg lb | | | | | | | *9950 *21,850 | *9950 *21,850 | | | *7800 *17,250 | *7800 *17,250 | 8.5 28.0 |
| 6.0 m 20.0 ft | kg lb | | | | | | | *10 400 *22,650 | *10 400 *22,650 | *9750 *18,650 | 7950 17,000 | *7650 *16,900 | 7550 16,700 | 9.3 31.0 |
| 4.5 m 15.0 ft | kg lb | | | *17 350 *37,250 | *17 350 *37,250 | *13 300 *28,750 | *13 300 *28,750 | *11 250 *24,400 | 10 300 22,200 | *10 050 *21,900 | 7750 16,700 | *7750 *17,050 | 6800 15,000 | 9.8 32.0 |
| 3.0 m 10.0 ft | kg lb | | | *21 250 *45,650 | 20 400 44,050 | *15 200 *32,750 | 13 550 29,250 | *12 250 *26,500 | 9850 21,250 | *10 500 *22,850 | 7550 16,200 | *8100 *17,750 | 6400 14,100 | 10.0 33.0 |
| 1.5 m 5.0 ft | kg lb | | | *17 600 *42,150 | *17 600 41,350 | *16 600 *35,900 | 12 850 27,700 | *13 050 *28,300 | 9450 20,400 | *10 950 *23,700 | 7300 15,750 | *8650 *19,000 | 6250 13,750 | 10.0 33.0 |
| 0 m 0 ft | kg lb | | | *19 850 *46,050 | 18 800 40,400 | *17 250 *37,300 | 12 450 26,800 | *13 500 *29,250 | 9150 19,750 | *11 100 *24,000 | 7150 15,400 | *9550 *21,050 | 6350 14,000 | 9.8 32.0 |
| -1.5 m -5.0 ft | kg lb | *14 100 *31,900 | *14 100 *31,900 | *22 350 *48,550 | 18 750 40,250 | *16 950 *36,750 | 12 250 26,400 | *13 350 *28,900 | 9050 19,450 | *10 700 *23,050 | 7100 15,300 | *10 150 *22,350 | 6750 14,950 | 9.3 31.0 |
| -3.0 m -10.0 ft | kg lb | *22 600 *51,000 | *22 600 *51,000 | *20 300 *43,950 | 18 900 40,650 | *15 750 *34,050 | 12 300 26,500 | *12 400 *26,600 | 9050 19,550 | | | *10 200 *22,400 | 7650 16,900 | 8.6 28.0 |
| -4.5 m -15.0 ft | kg lb | *21 200 *45,650 | *21 200 *45,650 | *16 850 *36,200 | *16 850 *36,200 | *13 200 *28,200 | 12 550 27,100 | | | | | *9850 *21,650 | 9450 21,100 | 7.4 24.0 |



ISO 10567



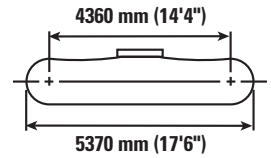
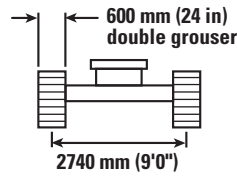
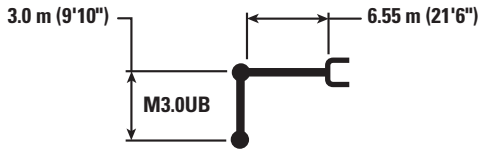
*Indicates that the load is limited by hydraulic lifting capacity rather than tipping load. The above loads are in compliance with hydraulic excavator lift capacity standard ISO 10567:2007. They do not exceed 87% of hydraulic lifting capacity or 75% of tipping load. Weight of all lifting accessories must be deducted from the above lifting capacities. Lifting capacities are based on the machine standing on a firm, uniform supporting surface. The use of a work tool attachment point to handle/lift objects, could affect the machine lift performance.

Lift capacity stays with ±5% for all available track shoes.

Always refer to the appropriate Operation and Maintenance Manual for specific product information.

349D2 L Hydraulic Excavator Specifications

Mass Boom (Long Fix Undercarriage) Lift Capacities – Counterweight: 9.0 mt (9.9 t) – Heavy Lift: Off



| | | 3.0 m/10.0 ft | | 4.5 m/15.0 ft | | 6.0 m/20.0 ft | | 7.5 m/25.0 ft | | 9.0 m/30.0 ft | | m ft | | |
|--------------------|----------|--------------------|--------------------|--------------------|--------------------|--------------------|--------------------|--------------------|------------------|--------------------|----------------|--------------------|------------------|-------------|
| | | | | | | | | | | | | | | |
| 7.5 m 25.0 ft | kg lb | | | | | | | *10 600 *23,400 | 10 350 21,950 | | | *9200 *20,350 | *9200 *20,350 | 7.7 25.0 |
| 6.0 m 20.0 ft | kg lb | | | | | | | *10 700 *23,400 | 10 200 21,950 | | | *8950 *19,750 | 8150 18,150 | 8.5 28.0 |
| 4.5 m 15.0 ft | kg lb | | | *17 350 *37,300 | *17 350 *37,300 | *13 400 *29,000 | *13 400 *29,000 | *11 400 *24,750 | 9850 21,200 | *9900 | 7300 | *9050 *19,900 | 7200 15,950 | 9.1 30.0 |
| 3.0 m 10.0 ft | kg lb | | | *21 050 *45,250 | 19 750 42,650 | *15 100 *32,650 | 13 050 28,150 | *12 250 *26,550 | 9400 20,250 | *10 600 *23,000 | 7100 15,300 | *9450 *20,750 | 6700 14,800 | 9.3 31.0 |
| 1.5 m 5.0 ft | kg lb | | | *21 700 *49,800 | 18 500 39,900 | *16 450 *35,550 | 12 350 26,600 | *12 950 *28,050 | 9000 19,400 | *10 850 *23,500 | 6900 14,850 | *10 150 *22,350 | 6550 14,400 | 9.3 31.0 |
| 0 m 0 ft | kg lb | | | *23 000 *49,900 | 18 100 38,900 | *16 950 *36,650 | 11 900 25,650 | *13 250 *28,700 | 8750 18,800 | *10 750 | 6800 | *10 600 *23,350 | 6700 14,700 | 9.1 30.0 |
| -1.5 m -5.0 ft | kg lb | *16 950 *38,350 | *16 950 *38,350 | *21 750 *47,150 | 18 050 38,850 | *16 500 *35,650 | 11 750 25,300 | *12 900 *27,800 | 8600 18,600 | | | *10 700 *23,550 | 7200 15,900 | 8.6 28.0 |
| -3.0 m -10.0 ft | kg lb | *24 700 *53,650 | *24 700 *53,650 | *19 250 *41,650 | 18 300 39,300 | *14 900 *32,100 | 11 850 25,500 | *11 300 *24,000 | 8750 18,850 | | | *10 650 *23,400 | 8350 18,550 | 7.8 26.0 |
| -4.5 m -15.0 ft | kg lb | | | *14 950 *31,900 | *14 950 *31,900 | *11 300 *23,700 | *11 300 *23,700 | | | | | *9950 *21,750 | *9950 *21,750 | 6.5 21.0 |



ISO 10567



*Indicates that the load is limited by hydraulic lifting capacity rather than tipping load. The above loads are in compliance with hydraulic excavator lift capacity standard ISO 10567:2007. They do not exceed 87% of hydraulic lifting capacity or 75% of tipping load. Weight of all lifting accessories must be deducted from the above lifting capacities. Lifting capacities are based on the machine standing on a firm, uniform supporting surface. The use of a work tool attachment point to handle/lift objects, could affect the machine lift performance.

Lift capacity stays with ±5% for all available track shoes.

Always refer to the appropriate Operation and Maintenance Manual for specific product information.

349D2 L Hydraulic Excavator Specifications

349D2 L Work Tool Offering Guide* – Turkey Region

| Boom Type | HD Reach Boom | Mass Boom |
|-----------------------------------|--|---|
| Stick Size | HD R3.35 (11'0") | M3.0 (9'10") |
| Hydraulic Hammer | H160Es H180Es ** | H160Es H180Es |
| Multi-Processor | MP30 CC Jaw MP30 CR Jaw MP30 PP Jaw ** MP30 PS Jaw MP30 S Jaw MP30 TS Jaw *** | MP30 CC Jaw MP30 CR Jaw MP30 PP Jaw MP30 PS Jaw MP30 S Jaw MP30 TS Jaw ^ |
| Crusher | P335 | P335 P360 *** # |
| Pulverizer | P235 | P235 |
| Demolition and Sorting Grapple | G330 | G330 |
| Mobile Scrap and Demolition Shear | S340B *** S365C ## S385C ## | S340B ** S365C ## S385C ## |
| Orange Peel Grapple | | |
| Clamshells | | |
| Rippers | | |
| Center-Lock Pin Grabber Coupler | | |
| Dedicated Quick Coupler | | |

These work tools are available for the 349D2 L FG.
Consult your Cat dealer for proper match.

* Offerings not available in all areas. Matches are dependent on excavator configurations. Consult your Cat dealer to determine what is offered in your area and for proper work tool match.

** Pin-on or CW coupler

*** Pin-on only

Over the front only

Boom mount

^ Over the front only with CL coupler

349D2 L Hydraulic Excavator Specifications

349D2 L Work Tool Offering Guide* – Australia and New Zealand Region

| Boom Type | HD Reach Boom | | | Mass Boom | |
|-----------------------------------|---|--|---|---|---|
| Stick Size | HD R3.9 (12'10") | HD R3.35 (11'0") | HD R2.9 (9'6") | M3.0 (9'10") | M2.5 (8'2") |
| Hydraulic Hammer | H160Es H180Es *** | H160Es H180Es ** | H160Es H180Es | H160Es H180Es | H160Es H180Es |
| Multi-Processor | MP30 CC Jaw ** MP30 CR Jaw ** MP30 PP Jaw *** MP30 PS Jaw ** MP30 S Jaw ** MP30 TS Jaw *** | MP30 CC Jaw MP30 CR Jaw MP30 PP Jaw ** MP30 PS Jaw MP30 S Jaw MP30 TS Jaw *** | MP30 CC Jaw MP30 CR Jaw MP30 PP Jaw MP30 PS Jaw MP30 S Jaw MP30 TS Jaw | MP30 CC Jaw MP30 CR Jaw MP30 PP Jaw MP30 PS Jaw MP30 S Jaw MP30 TS Jaw ^ | MP30 CC Jaw MP30 CR Jaw MP30 PP Jaw MP30 PS Jaw MP30 S Jaw MP30 TS Jaw MP40 CC Jaw *** # MP40 CR Jaw *** # MP40 S Jaw *** # |
| Crusher | P335 ** | P335 | P335 | P335 P360 *** # | P335 P360 *** |
| Pulverizer | P235 ** | P235 | P235 | P235 | P235 |
| Demolition and Sorting Grapple | G330 | G330 | G330 | G330 | G330 |
| Mobile Scrap and Demolition Shear | S340B *** S365C ## S385C ## | S340B *** S365C ## S385C ## | S340B ** S365C ## S385C ## | S340B ** S365C ## S385C ## | S340B S365C ## S385C ## |
| Orange Peel Grapple | | | | | |
| Clamshells | | | | | |
| Rippers | | | | | |
| Center-Lock Pin Grabber Coupler | | | | | |
| Dedicated Quick Coupler | | | | | |

These work tools are available for the 349D2 L FG.
Consult your Cat dealer for proper match.

* Offerings not available in all areas. Matches are dependent on excavator configurations. Consult your Cat dealer to determine what is offered in your area and for proper work tool match.

** Pin-on or CW coupler

*** Pin-on only

Over the front only

Boom mount

^ Over the front only with CL coupler

349D2 L Hydraulic Excavator Specifications

Bucket Specifications and Compatibility – Turkey Region

| | Linkage | Width | | Capacity | | Weight | | Fill | Reach Boom | ME Boom | |
|--|---------|-------|----|----------------|-----------------|--------|-------|------|-------------------|-------------------|--------------|
| | | mm | in | m ³ | yd ³ | kg | lb | | % | R3.35 (11'0") | M3.0 (9'10") |
| | | | | | | | | | 600 mm (24 in) DG | 600 mm (24 in) DG | |
| Without Pin Grabber Coupler | | | | | | | | | | | |
| General Duty (GD) | UB | 1450 | 58 | 2.39 | 3.13 | 2324 | 5,122 | 100% | | ● | |
| | UB | 2000* | 80 | 3.60 | 4.71 | 2881 | 6,350 | 100% | | ○** | |
| Heavy Duty (HD) | TB | 1500 | 60 | 2.41 | 3.16 | 2065 | 4,551 | 100% | ⊙ | | |
| | TB | 1650 | 66 | 2.41 | 3.15 | 2210 | 4,871 | 100% | ⊖ | | |
| | TB | 1850 | 74 | 2.78 | 3.64 | 2420 | 5,334 | 100% | ○ | | |
| | UB | 1650 | 65 | 2.77 | 3.62 | 2562 | 5,647 | 100% | | ⊖ | |
| | UB | 1850 | 73 | 3.19 | 4.16 | 2735 | 6,028 | 100% | | ○ | |
| | UB | 1950 | 77 | 3.43 | 4.48 | 2898 | 6,387 | 100% | | ◇ | |
| Severe Duty (SD) | TB | 1900 | 75 | 2.78 | 3.64 | 2716 | 5,986 | 90% | ○ | | |
| | UB | 1450 | 58 | 2.39 | 3.13 | 2540 | 5,598 | 90% | | ⊙ | |
| | UB | 1550 | 62 | 2.61 | 3.41 | 2648 | 5,836 | 90% | | ⊖ | |
| | UB | 1650 | 65 | 2.77 | 3.62 | 2729 | 6,015 | 90% | | ⊖ | |
| | UB | 1850 | 73 | 3.21 | 4.20 | 2987 | 6,583 | 90% | | ○ | |
| | UB | 1950 | 77 | 3.43 | 4.48 | 3058 | 6,740 | 90% | | ○ | |
| Extreme Duty (XD) | TB | 1700 | 67 | 2.41 | 3.15 | 2765 | 6,094 | 90% | ⊖ | | |
| | UB | 1550 | 62 | 2.61 | 3.41 | 3091 | 6,813 | 90% | | ⊖ | |
| | UB | 1650 | 65 | 2.77 | 3.62 | 3192 | 7,035 | 90% | | ○ | |
| Maximum load pin-on (payload + bucket) | | | | | | | | kg | 6446 | 6808 | |
| | | | | | | | | lb | 14,207 | 15,005 | |

The above loads are in compliance with hydraulic excavator standard EN474, they do not exceed 87% of hydraulic lifting capacity or 75% of tipping capacity with front linkage fully extended at ground line with bucket curled.

Capacity based on ISO 7451.

Bucket weight with Long tips.

*This bucket might reduce front structure life.

**For light dirt applications only. Consult your dealer to understand your application before using this bucket in combination with this stick.

Caterpillar recommends using appropriate work tools to maximize the value customers receive from our products. Use of work tools, including buckets, which are outside of Caterpillar's recommendations or specifications for weight, dimensions, flows, pressures, etc. may result in less-than-optimal performance, including but not limited to reductions in production, stability, reliability, and component durability. Improper use of a work tool resulting in sweeping, prying, twisting and/or catching of heavy loads will reduce the life of the boom and stick.

Maximum Material Density

- 2100 kg/m³ (3500 lb/yd³)
- ⊙ 1800 kg/m³ (3000 lb/yd³)
- ⊖ 1500 kg/m³ (2500 lb/yd³)
- 1200 kg/m³ (2000 lb/yd³)
- ◇ 900 kg/m³ (1500 lb/yd³)

349D2 L Hydraulic Excavator Specifications

Bucket Specifications and Compatibility – Australia and New Zealand Region

| | Linkage | Width | | Capacity | | Weight | | Fill | Reach Boom | ME Boom | | | Reach Boom | | |
|--|---------|-------|----|----------------|-----------------|--------|-------|------|------------|-------------------|-------------------|-------------------|-------------------|-------------------|-------------------|
| | | mm | in | m ³ | yd ³ | kg | lb | | % | R3.35 (11'0") | M2.5 (8'2") | M3.0 (9'10") | R2.9 (9'6") | R3.35 (11'0") | R3.9 (12'10") |
| | | | | | | | | | | 750 mm (30 in) DG | 750 mm (30 in) DG | 750 mm (30 in) DG | 750 mm (30 in) DG | 750 mm (30 in) DG | 750 mm (30 in) DG |
| Without Pin Grabber Coupler | | | | | | | | | | | | | | | |
| General Duty (GD) | UB | 1450 | 58 | 2.390 | 3.13 | 2324 | 5,122 | 100% | | ● | ⊙ | | | | |
| | UB | 1550 | 62 | 2.610 | 3.41 | 2418 | 5,329 | 100% | | ⊙ | ⊖ | | | | |
| Heavy Duty (HD) | TB | 1650 | 66 | 2.410 | 3.16 | 2259 | 4,979 | 100% | ⊖ | | | ⊙ | ⊖ | ⊖ | |
| | TB | 900 | 36 | 1.077 | 1.41 | 1563 | 3,445 | 100% | ● | | | ● | ● | ● | |
| | TB | 1050 | 42 | 1.337 | 1.75 | 1655 | 3,648 | 100% | ● | | | ● | ● | ● | |
| | TB | 1200 | 48 | 1.600 | 2.09 | 1814 | 3,998 | 100% | ● | | | ● | ● | ● | |
| | TB | 1350 | 54 | 1.868 | 2.44 | 1941 | 4,278 | 100% | ● | | | ● | ● | ● | |
| | TB | 1500 | 60 | 2.140 | 2.80 | 2104 | 4,637 | 100% | ⊙ | | | ● | ⊙ | ⊙ | |
| | TB | 1650 | 66 | 2.414 | 3.16 | 2266 | 4,994 | 100% | ⊖ | | | ⊙ | ⊖ | ⊖ | |
| | TB | 1800 | 72 | 2.692 | 3.52 | 2395 | 5,279 | 100% | ⊖ | | | ⊖ | ⊖ | ○ | |
| Severe Duty (SD) | TB | 1400 | 55 | 1.870 | 2.44 | 2157 | 4,754 | 90% | ● | | | ● | ● | ● | |
| Maximum load pin-on (payload + bucket) | | | | | | | | | kg | 6446 | 7645 | 6929 | 6983 | 6523 | 6114 |
| | | | | | | | | | lb | 14,207 | 16,850 | 15,272 | 15,391 | 14,377 | 13,475 |
| With Pin Grabber Quick Coupler | | | | | | | | | | | | | | | |
| General Duty (GD) | UB | 1450 | 58 | 2.390 | 3.13 | 2324 | 5,122 | 100% | | ● | ⊙ | | | | |
| | UB | 1550 | 62 | 2.610 | 3.41 | 2418 | 5,329 | 100% | | ⊙ | ⊖ | | | | |
| Heavy Duty (HD) | TB | 1650 | 66 | 2.410 | 3.16 | 2259 | 4,979 | 100% | ⊖ | | | ⊙ | ⊖ | ⊖ | |
| | TB | 900 | 36 | 1.077 | 1.41 | 1563 | 3,445 | 100% | ● | | | ● | ● | ● | |
| | TB | 1050 | 42 | 1.337 | 1.75 | 1655 | 3,648 | 100% | ● | | | ● | ● | ● | |
| | TB | 1200 | 48 | 1.600 | 2.09 | 1814 | 3,998 | 100% | ● | | | ● | ● | ● | |
| | TB | 1350 | 54 | 1.868 | 2.44 | 1941 | 4,278 | 100% | ● | | | ● | ● | ● | |
| | TB | 1500 | 60 | 2.140 | 2.80 | 2104 | 4,637 | 100% | ⊙ | | | ● | ⊙ | ⊙ | |
| | TB | 1650 | 66 | 2.414 | 3.16 | 2266 | 4,994 | 100% | ⊖ | | | ⊙ | ⊖ | ⊖ | |
| | TB | 1800 | 72 | 2.692 | 3.52 | 2395 | 5,279 | 100% | ⊖ | | | ⊖ | ⊖ | ○ | |
| Severe Duty (SD) | TB | 1400 | 55 | 1.870 | 2.44 | 2157 | 4,754 | 90% | ● | | | ● | ● | ● | |
| Maximum load pin-on (payload + bucket) | | | | | | | | | kg | 5613 | 6812 | 6096 | 6150 | 5690 | 5281 |
| | | | | | | | | | lb | 12,371 | 15,014 | 13,436 | 13,555 | 12,541 | 11,639 |

The above loads are in compliance with hydraulic excavator standard EN474, they do not exceed 87% of hydraulic lifting capacity or 75% of tipping capacity with front linkage fully extended at ground line with bucket curled.

Capacity based on ISO 7451.

Bucket weight with Long tips.

Maximum Material Density

- 2100 kg/m³ (3500 lb/yd³)
- ⊙ 1800 kg/m³ (3000 lb/yd³)
- ⊖ 1500 kg/m³ (2500 lb/yd³)
- 1200 kg/m³ (2000 lb/yd³)

Caterpillar recommends using appropriate work tools to maximize the value customers receive from our products. Use of work tools, including buckets, which are outside of Caterpillar's recommendations or specifications for weight, dimensions, flows, pressures, etc. may result in less-than-optimal performance, including but not limited to reductions in production, stability, reliability, and component durability. Improper use of a work tool resulting in sweeping, prying, twisting and/or catching of heavy loads will reduce the life of the boom and stick.

349D2 L Standard Equipment

Standard Equipment

Standard equipment may vary. Consult your Cat dealer for details.

ENGINE

- Cat C13 ACERT engine
- Meets Tier 3, Stage IIIA equivalent emission standards
- 2300 m (7,500 ft) altitude capability
- Radial seal air filters (primary and secondary filter)
- Glow plugs (for cold weather start)
- Automatic engine speed control with one touch low idle
- High ambient cooling package 52° C (125° F)
- Water separator with water level indicator sensor
- Waved fin radiator with space for cleaning
- Two speed travel
- Electric priming pump
- Fuel pressure differential gauge
- ECO and HHP

HYDRAULIC SYSTEM

- Regeneration circuits for boom and stick
- Auxiliary hydraulic valve
- Reverse swing damping valve
- Automatic swing parking brake
- Boom drift reducing valve
- Boom lowering device for back-up
- Stick drift reducing valve
- Straight travel hydraulic circuit
- High performance hydraulic return filters

CAB

- Pressurized ROPS cab
- Fully adjustable mechanical suspension seat
- Adjustable armrest
- Seat belt, retractable (76 mm [3 in] width)
- 70/30 split front windshield
- Laminated upper front windshield and tempered other windows
- Sliding upper door window
- Openable front windshield with assist device
- Pillar mounted upper windshield wiper and washer
- Bi-level air conditioner (automatic) with defroster (pressurized function)
- Color LCD display with warning, filter/fluid change, and working hour information
- Control lever joysticks
- Hydraulic activation control lever (lock out for all controls)
- Travel control pedals with removable hand levers
- Radio mounting (DIN size)
- Radio ready
- 12V – 2× maximum 10A power supply
- Two stereo speakers
- Beverage holder
- Coat hook
- Openable roof hatch
- Washable floor mat

UNDERCARRIAGE

- Idler and center section track guiding guard
- Towing eye on base frame
- Grease lubricated track

ELECTRICAL

- Batteries (2 × 750 CCA)
- 75 amp alternator
- 24V – 7.5 kW starter motor

LIGHTS

- Left boom working light
- Right working light mounted in the storage box
- Interior lighting

SAFETY & SECURITY

- Cat one key security system
- Door and compartment locks
- Signaling/warning horn
- Rearview mirrors
- Fire wall between engine and pump compartment
- Emergency engine shutoff switch
- Emergency exit rear window
- Battery disconnect switch
- Rearview camera

COUNTERWEIGHT

- 9.0 mt (9.9 t) counterweight

TECHNOLOGY

- Product Link
- Cat Electronic Technician data link

Optional Equipment

Optional equipment may vary. Consult your Cat dealer for details.

ENGINE

- Starting kit, cold weather, -32°C (-25.6°F), ether or block heater
- Air prefilter

HYDRAULIC SYSTEM

- Auxiliary hydraulics options
- Hammer circuit, foot pedal operated
- Two way combined circuit, foot pedal operated
- Two way combined circuit, joystick operated
- Two way combined circuit with medium pressure, joystick operated
- Auxiliary hydraulic lines for booms and sticks

UNDERCARRIAGE AND GUARDS

- 600 mm (24 in) double grouser shoes
- 600 mm (24 in) triple grouser shoes
- 750 mm (30 in) double grouser shoes
- 750 mm (30 in) triple grouser shoes
- 900 mm (35 in) triple grouser shoes
- Full length track guiding guard (2 pieces)
- Guard package

LIGHTS

- Cab mounted working lights
- Right mounted boom light for reach boom

TECHNOLOGY

- AccuGrade Ready Option (ARO)

FRONT LINKAGE

- Booms
 - Reach 6.9 m (22'8")
 - Mass 6.55 m (21'6")
- Sticks
 - Reach 2.9 m (9'6")
 - Reach 3.35 m (11'0")
 - Reach 3.9 m (12'10")
 - Mass 2.5 m (8'2")
 - Mass 3.0 m (9'10")

For more complete information on Cat products, dealer services, and industry solutions, visit us on the web at www.cat.com

AEHQ7300-03 (10-2017)
Replaces AEHQ7300-02

© 2017 Caterpillar
All rights reserved

Materials and specifications are subject to change without notice. Featured machines in photos may include additional equipment. See your Cat dealer for available options.

CAT, CATERPILLAR, SAFETY.CAT.COM, their respective logos, "Caterpillar Yellow" and the "Power Edge" trade dress, as well as corporate and product identity used herein, are trademarks of Caterpillar and may not be used without permission.

VisionLink is a trademark of Trimble Navigation Limited, registered in the United States and in other countries.

